

Firmware Upgrade Instructions

Product

iBCN (MMI-7500)

Firmware Release

1.2.5

Requirements

- Download and extract the firmware update package to your PC
- Firmware update package should include:
 - o Upgrade instructions (this document).
 - o Latest iBCN firmware (PID7014_1_2_5.exe and PID7014_1_2_5.hex).
 - o Latest MetOcean Product Configurator software v1.0.10.
- A Bluetooth connection between the PC and the iBCN.
- A fresh set of batteries to use during the upgrade procedure in order to prevent sudden loss of power during the upgrade.

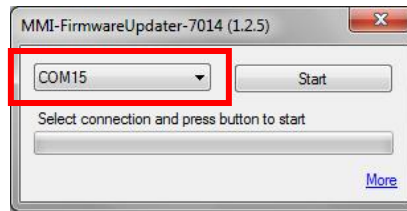
Upgrade Procedure

Establishing Bluetooth communication (as outlined in the Operation and Maintenance Manual v1.6)

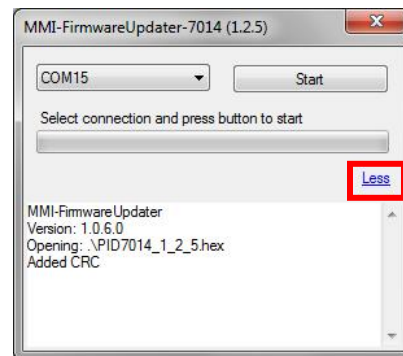
1. Remove the magnet from the iBCN OEM head and disconnect power for at least 2 minutes.
2. Install batteries to power-up the device.
3. Add the device to the PC's Bluetooth devices if not done previously
 - a. Add the new Bluetooth device, it will appear as an MMI-513
 - b. Enter the device pairing code **0000**
 - c. Device will be added to list of Bluetooth devices
 - d. Your PC will initialize the COM port drivers and assign COM port to your device
 - e. The Bluetooth connection will only be active for 10 minutes after initial power up

Upgrading the firmware

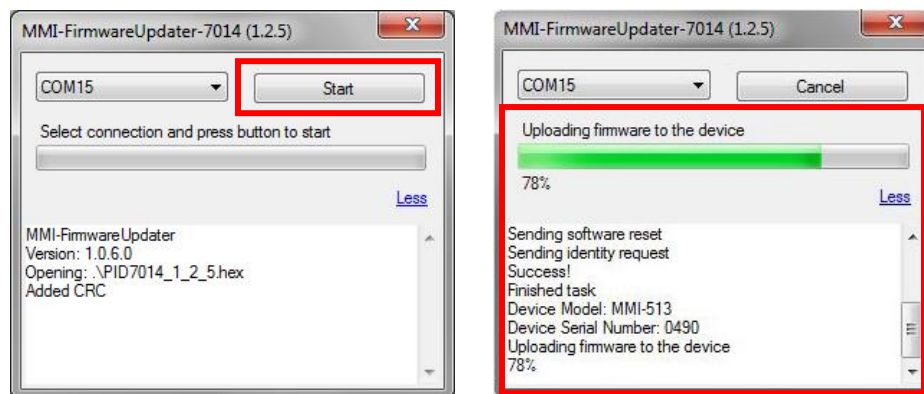
1. Double-click PID7014_1_2_5.exe to launch the MMI Firmware Updater.
2. Ensure the correct **COM** port is selected in order to connect via Bluetooth to your device.



3. Clicking the “**More/Less**” button will expand the dialog box and display additional diagnostics information during the firmware upgrade procedure.



4. Click the “**Start**” button to begin uploading the firmware to the device.



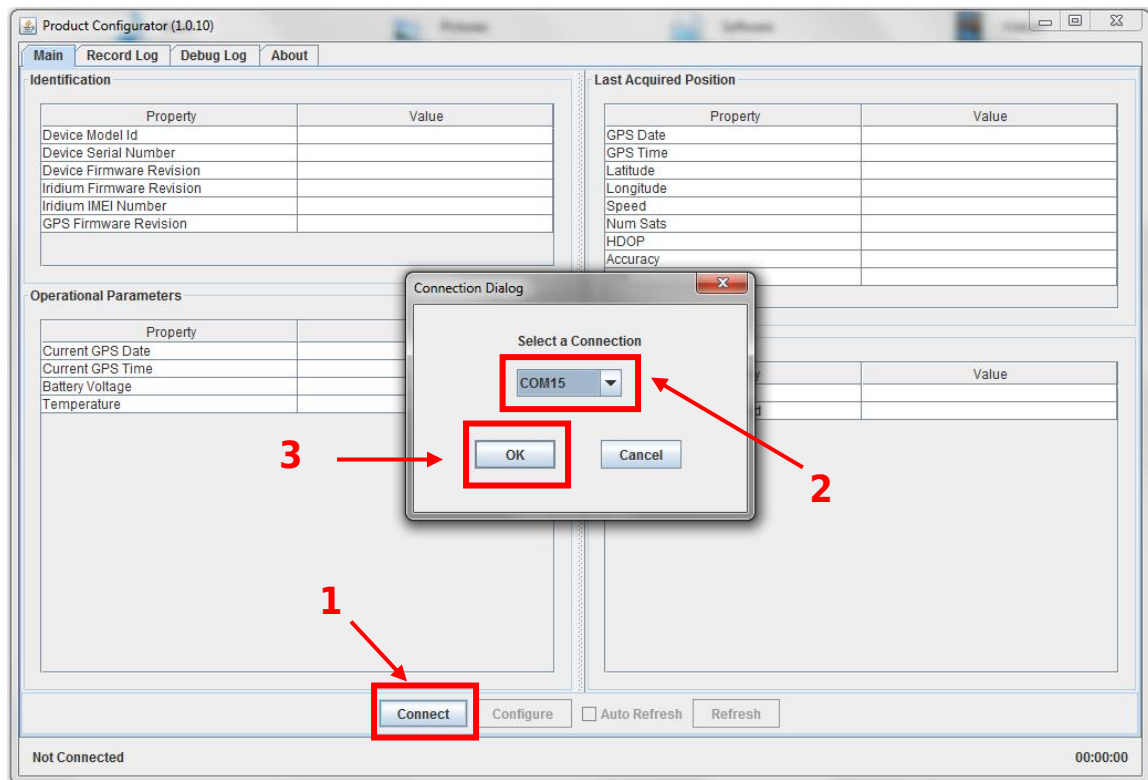
5. Once the firmware update is complete, you **MUST** power down the device for 2 minutes before resuming operation.

Installing the MetOcean Product Configurator

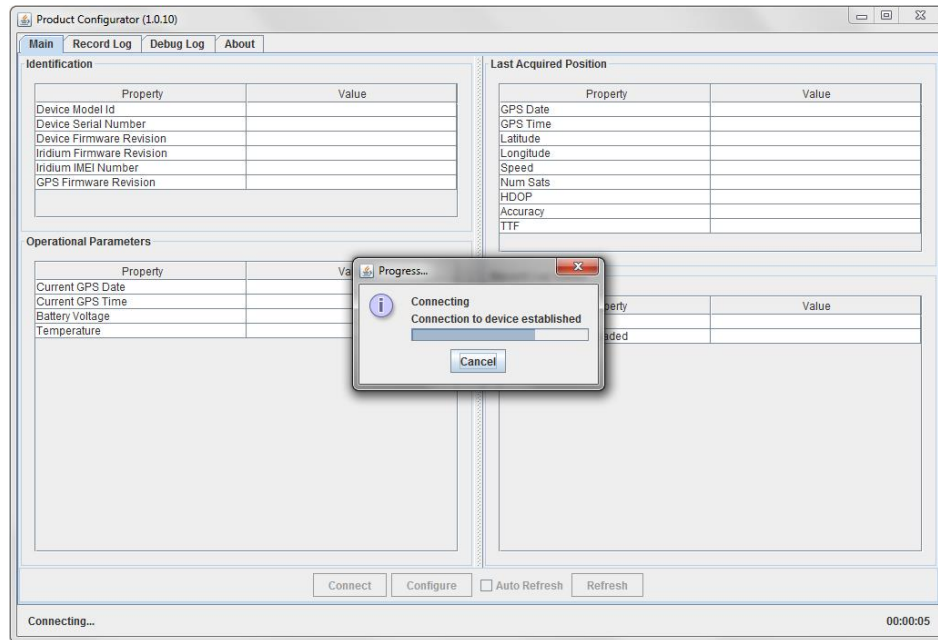
1. Locate the installation file "Metocean_Product_Configurator_windows_1_0_10.exe" which was included with the firmware update package.
2. Double-click the installer file to begin the software installation.
3. Click "Yes" at the prompt to accept the User Access Control and allow the software to install.
4. Select all the default options and allow the installation to finish.
5. Click finish to exit.

Connecting your iBCN to the Product Configurator

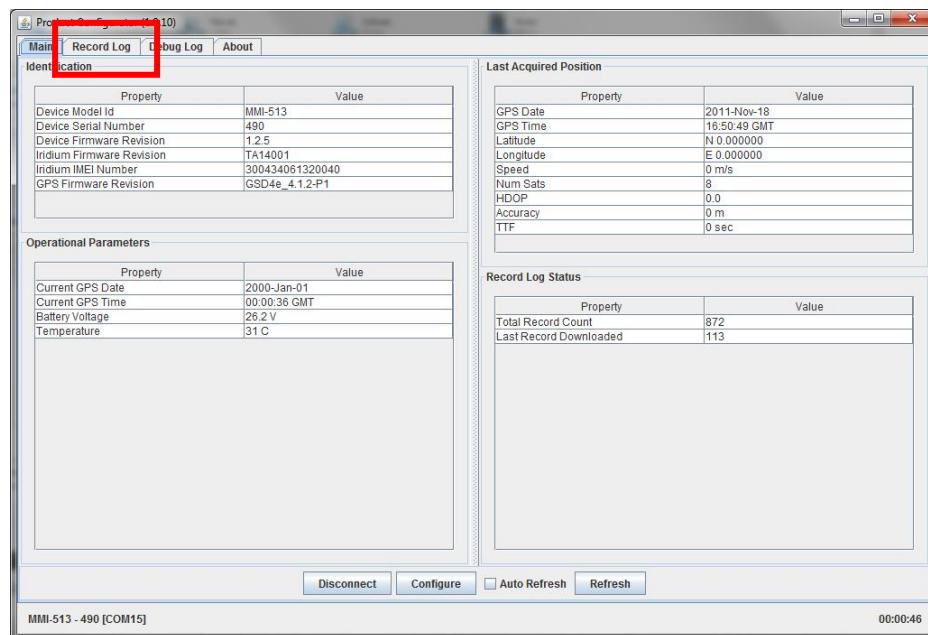
1. If your iBCN has been powered on for more than 10 minutes, you will have to remove the batteries and wait 2 minutes before powering it back up. This will re-enable Bluetooth communications.
2. Launch the MetOcean Product Configurator either from the desktop icon or your Start Menu.
3. Select the "Connect" button and ensure you have the correct COM port selected.
4. Select OK to connect.



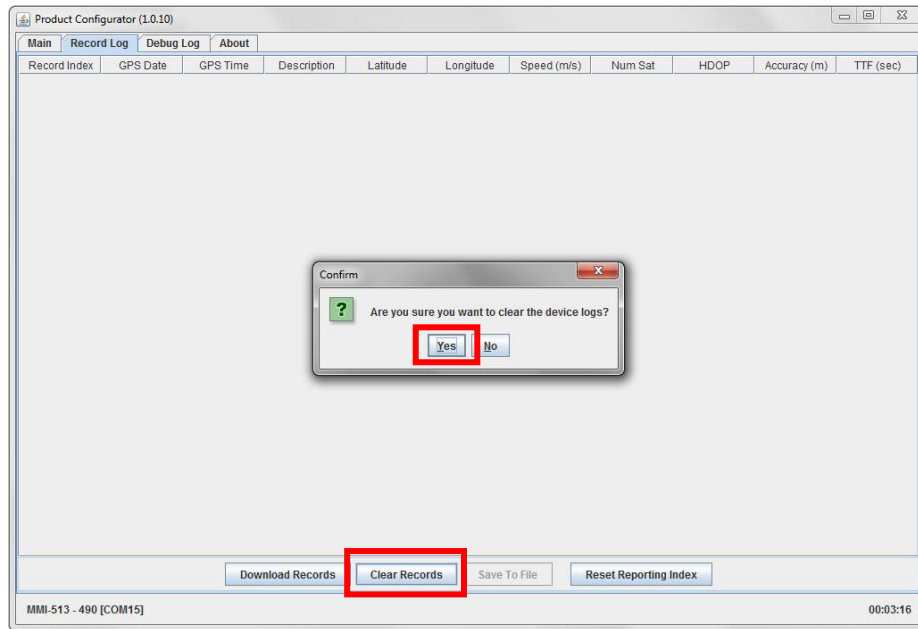
5. The software will attempt connection via Bluetooth and retrieve all of the current device settings and diagnostics information.



6. Once connected, click the Record Log tab.



7. Select the option to "Clear Records" and confirm you wish to clear the records from the device.



8. It may take up to 2 minutes to clear the memory in the device and once finished, simply hit OK and then the "Disconnect" button under the Main tab. Once disconnected, you can shut down the software.

